

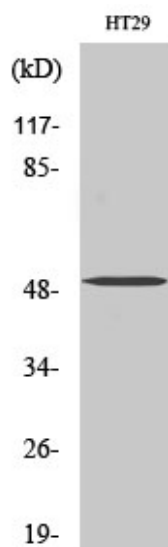


# SMYD2 Polyclonal Antibody

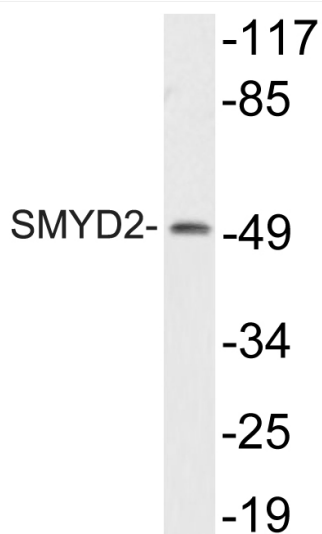
<b>Catalog No</b>	YP-Ab-02024
<b>Isotype</b>	IgG
<b>Reactivity</b>	Human;Mouse;Rat
<b>Applications</b>	WB; ELISA;IHC
<b>Gene Name</b>	SMYD2
<b>Protein Name</b>	N-lysine methyltransferase SMYD2
<b>Immunogen</b>	The antiserum was produced against synthesized peptide derived from human SMYD2. AA range:99-148
<b>Specificity</b>	SMYD2 Polyclonal Antibody detects endogenous levels of SMYD2 protein.
<b>Formulation</b>	Liquid in PBS containing 50% glycerol, 0.5% BSA and 0.02% sodium azide.
<b>Source</b>	Polyclonal, Rabbit,IgG
<b>Purification</b>	The antibody was affinity-purified from rabbit antiserum by affinity-chromatography using epitope-specific immunogen.
<b>Dilution</b>	WB 1:500-2000;IHC-p 1:50-300; ELISA 2000-20000
<b>Concentration</b>	1 mg/ml
<b>Purity</b>	≥90%
<b>Storage Stability</b>	-20°C/1 year
<b>Synonyms</b>	SMYD2; KMT3C; N-lysine methyltransferase SMYD2; HSKM-B; Histone methyltransferase SMYD2; Lysine N-methyltransferase 3C; SET and MYND domain-containing protein 2
<b>Observed Band</b>	50kD
<b>Cell Pathway</b>	Cytoplasm, cytosol . Nucleus .
<b>Tissue Specificity</b>	Brain,Colon,Liver cancer,Testis,
<b>Function</b>	similarity:Contains 1 MYND-type zinc finger.,similarity:Contains 1 SET domain.,
<b>Background</b>	SET and MYND domain containing 2(SMYD2) Homo sapiens SET domain-containing proteins, such as SMYD2, catalyze lysine methylation (Brown et al., 2006 [PubMed 16805913]).[supplied by OMIM, Nov 2008],
<b>matters needing attention</b>	Avoid repeated freezing and thawing!
<b>Usage suggestions</b>	This product can be used in immunological reaction related experiments. For more information, please consult technical personnel.



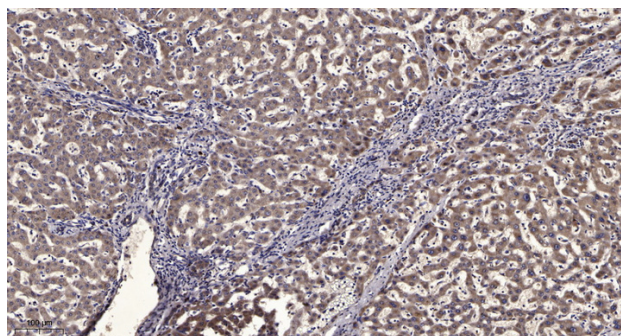
## Products Images



Western Blot analysis of various cells using SMYD2 Polyclonal Antibody diluted at 1:2000



Western blot analysis of lysate from HT29 cells, using SMYD2 antibody.



Immunohistochemical analysis of paraffin-embedded human liver cancer. 1, Antibody was diluted at 1:200(4° overnight). 2, Tris-EDTA,pH9.0 was used for antigen retrieval. 3,Secondary antibody was diluted at 1:200(room temperature, 45min).